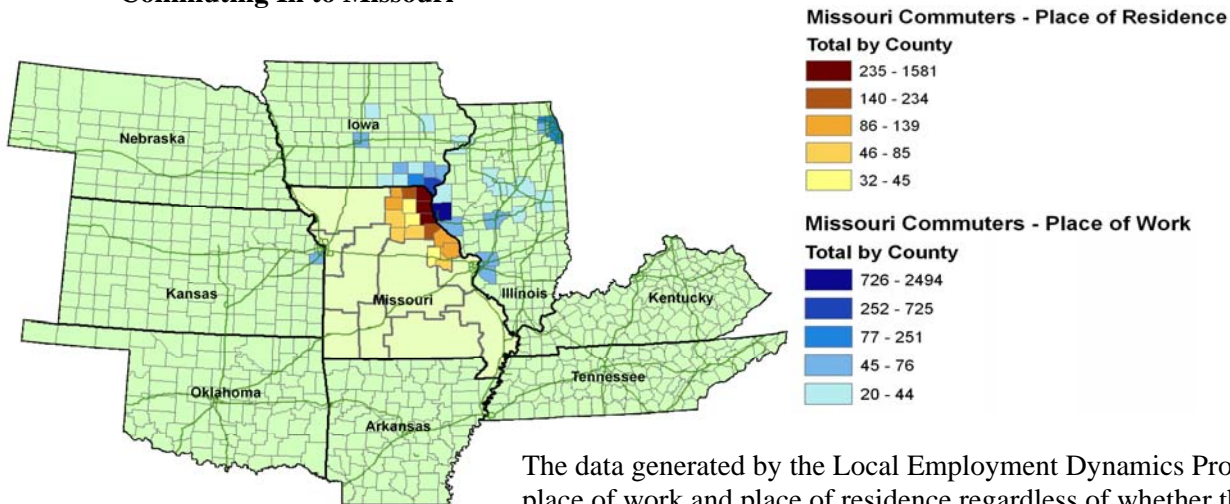


# Cross-State-Line Commuting from the Northeast Missouri WIA

This report highlights cross-state commuting patterns for the Northeast Workforce Investment Area (WIA) in Missouri. Specifically, this analysis focuses on non-Missouri residents coming to the Northeast WIA to find employment, and Northeast WIA residents leaving to work out-of-state.

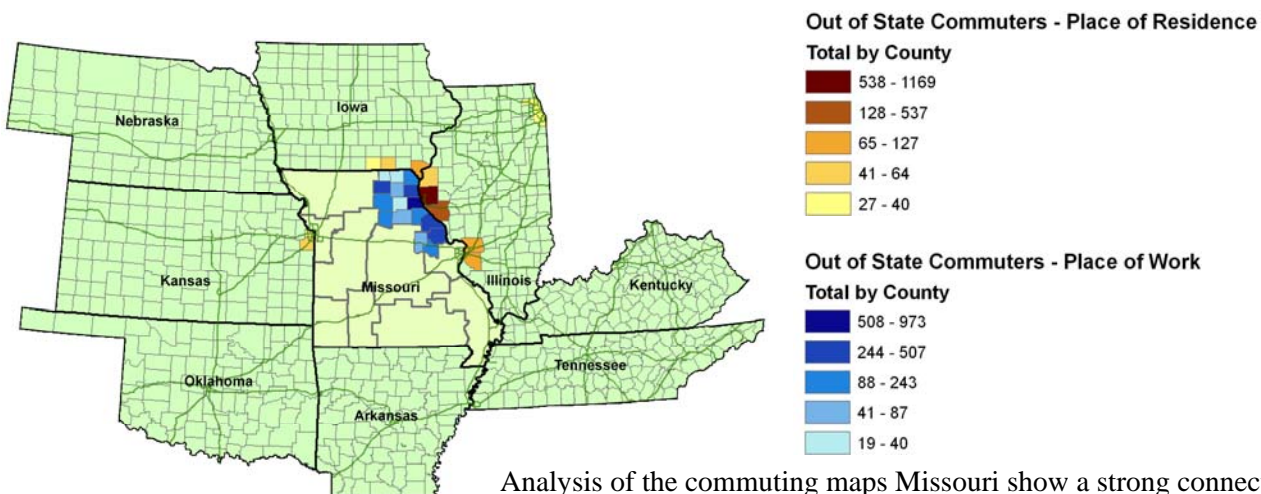
## Northeast WIA Commuting Patterns

### Commuting In to Missouri



The data generated by the Local Employment Dynamics Program unites place of work and place of residence regardless of whether the commute is physical, a telecommute or a temporary consultancy. Therefore such long distance commuting patterns as between Chicago and Hannibal may represent weekly commutes or consultancy arrangements.

### Commuting Out of Missouri



Analysis of the commuting maps Missouri show a strong connection between the Northeast WIA and Chicago and the western counties of Illinois. The majority of the cross state line commuting is physical and links Hannibal and Kirksville Missouri with the western counties of Illinois.

## Commuting Connections with Other WIAs

Northeast WIA	
Live and work in the Northeast WIA	13,046
Live in Northeast WIA , work in Mo outside of Northeast WIA	32,637
Work in Northeast WIA , live in Mo outside of Northeast WIA	11,804
Live in Northeast WIA , work outside of Missouri	5,269
Work in Northeast WIA , live outside of Missouri	3,552

Over twice the number of workers (37,906) leaves the Northeast WIA as enter it (15,356) for employment.

Live in Northeast WIA , Work in	
Arkansas	49
Illinois	3,518
Iowa	1,476
Kansas	109
Kentucky	36
Oklahoma	50
Tennessee	31
Outside of Missouri	5,269

Over two-thirds of those leaving the Northeast WIA (26,327) go to the St. Louis WIA (18,850) or the Central WIA (7,477) for work. Over one-third of those (5,681) entering the Northeast WIA for work come from the St. Louis Metro WIA.

## Long Distance Connections with Northeast

There is no significant connection between the Northeast WIA and non-surrounding states for employment.

## Notes and Sources

Local Employment Dynamics (LED) tables and maps were created by MERIC using LED data for Missouri, Illinois, Iowa, Kansas, Oklahoma, Arkansas, Kentucky and Tennessee housed at Cornell University. LED is a program developed by the US Census Bureau, in partnership with the state labor market information offices and the IRS. The most recent year for which data are available is 2004.

- Only commuting patterns between Missouri and the surrounding states are reflected in the maps and tables.
- Mapped commuting patterns represent at least 20 primary jobs linked between the other state's county and the Missouri WIA.
- References to commuting between non-surrounding states and a Missouri WIA represent at least 50 primary jobs linked between the other state's county and the Missouri WIA.